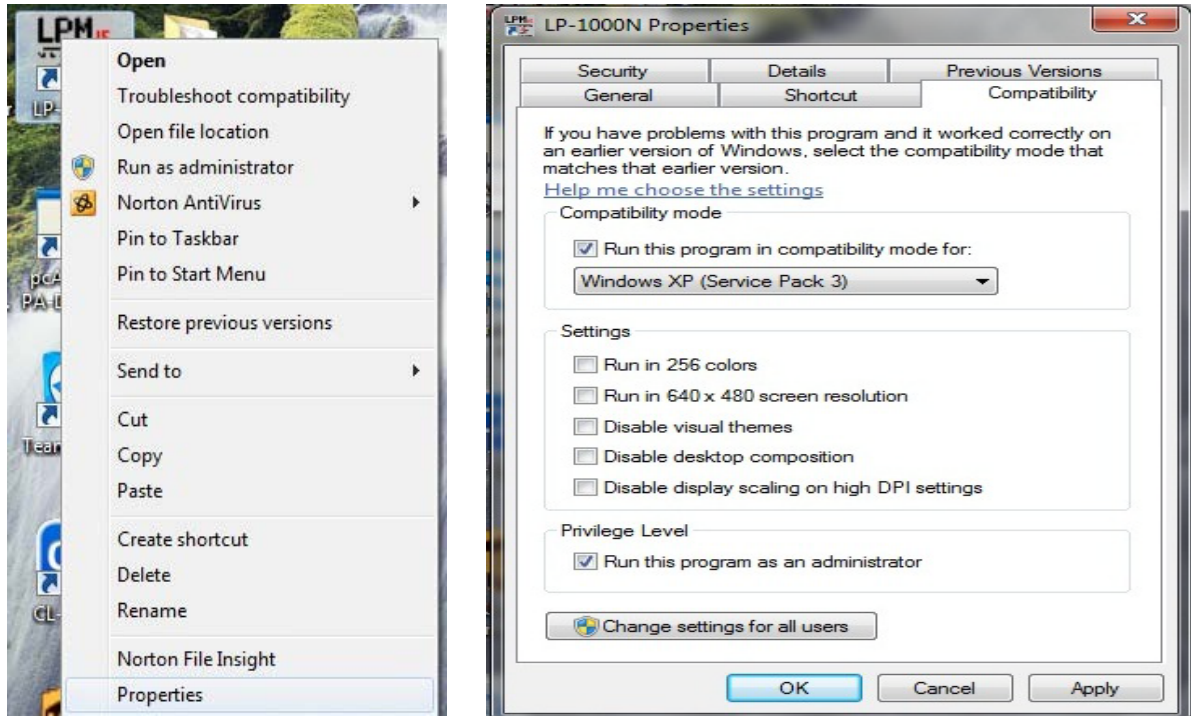
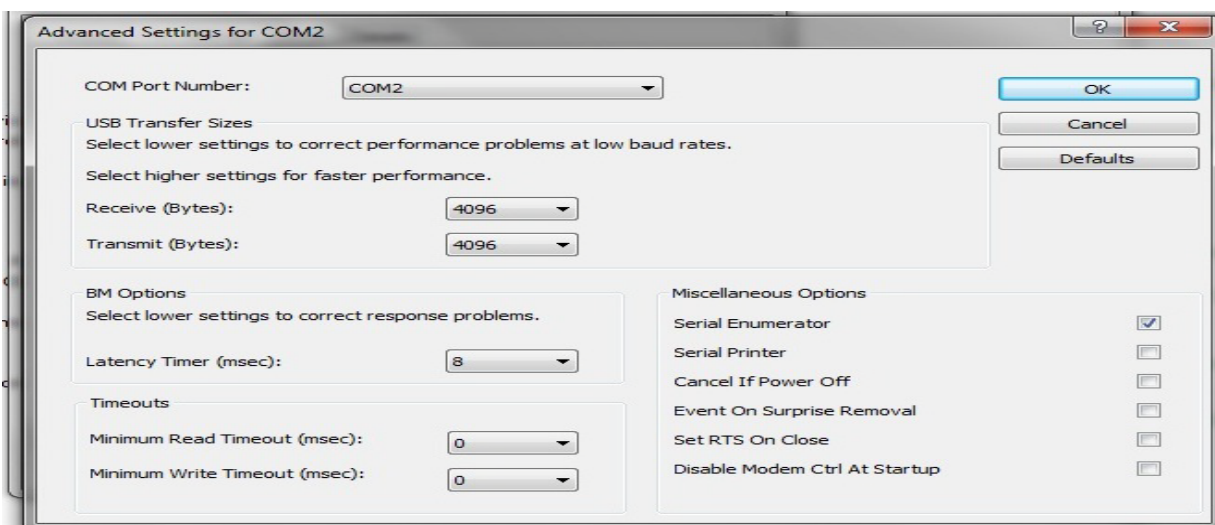


## LP WORKS WITH 64 BIT OPERATING SYSTEMS

1. Close the program if it is open. Right click the desktop icon and select properties from the drop down menu.



2. From the properties box select Compatibility. Put a check mark in Run this program in compatibility mode for:. It doesn't matter what service pack as long as Windows XP is selected. Also put a check mark in Run this program as an administrator.



3. If using the USB port on the scale go to device manager and ports. Right click the USB serial port and select properties. Select port settings and then advanced port settings. Change the latency timer to 8. Click OK to close everything. LP works will now work.